

# Efficient, cost-effective gas engine ignition module

- Economical ignition module for 1-12 cylinders
- Up to 3000 microseconds continuous spark duration
- Inductive ignition technology
- Improved combustion assists emissions reduction
- Free, easy to use Windows® based software
- Integrated 3 LED status indicator



## SUMMARY

The GT12 is a feature-packed module that delivers up to 3,000 microseconds of continuous spark duration using inductive ignition technology.

GT12 is a robust, solid-state electronic module that provides highly accurate and extremely powerful inductive ignition, which when tailored with the Gill range of ignition coils, produces spark durations well in excess of any CDI ignition system.

Timing can be adjusted globally, by individual cylinder or with a set of five load-input maps that are easy to set up and customise using the Windows®-based software.

## GT12 SPECIFICATION

<b>Number of cylinders</b>	1 - 12
<b>Power</b>	12 / 24V DC, 5 Amp
<b>Spark energy / duration</b>	500 to 3000 µSeconds continuous spark duration
<b>Maximum RPM</b>	4000
<b>Timing</b>	Global, individual cylinder, dual fuel
<b>Timing maps</b>	2D - speed and timing or 3D - speed, timing and load with 5 maps
<b>Trigger methods</b>	Single pickup, existing OEM disc and pickup, A3 or A5 conversion kit, GM® distributor timing kit, drilled flywheel pattern for wasted spark on 4 stroke, or for 2 stroke engines
<b>Software</b>	Windows® Based - available in multi-level security versions - basic to advanced
<b>Programming</b>	File set-up, save, send, store. Configuration files can be saved, or emailed
<b>Logging</b>	Verification and troubleshooting - files can be emailed for additional review by support staff
<b>Communications</b>	RS 232, DB 9 female connection
<b>Features</b>	Tach output signal, shutdown ground, fuel valve sequencing
<b>Visual features</b>	3 integrated LED lights that confirm proper operation
<b>Application</b>	All horsepower and engine sizes - low speed or high speed, up to 2 coils per cylinder
<b>Environmental</b>	-40° to +90°C sealed to IP67

> More information at [gillsc.com](http://gillsc.com)

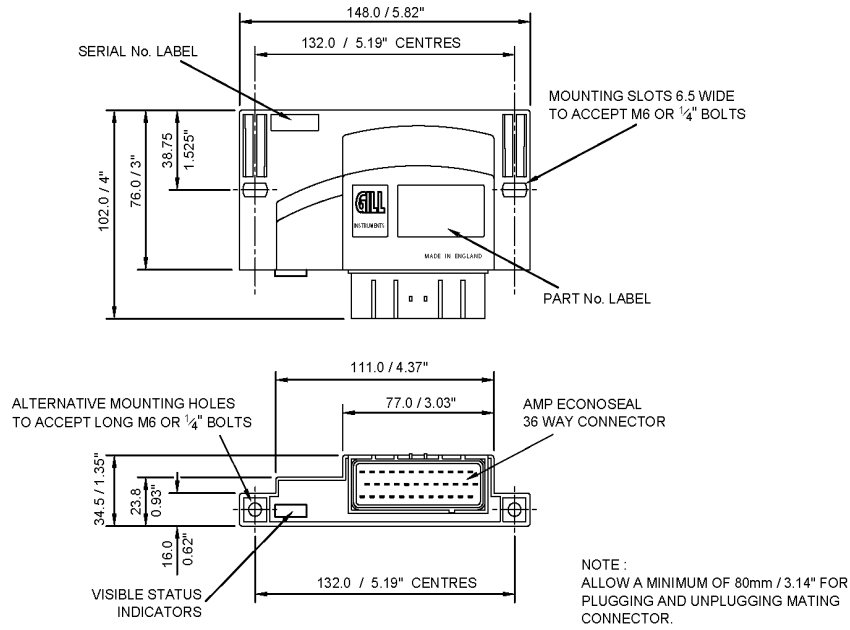
E [support@gillsc.com](mailto:support@gillsc.com)

T +44 (0)1590 613900

**GILL**

Sensors & Controls

DIMENSIONS



TYPICAL SYSTEM INSTALLATION

