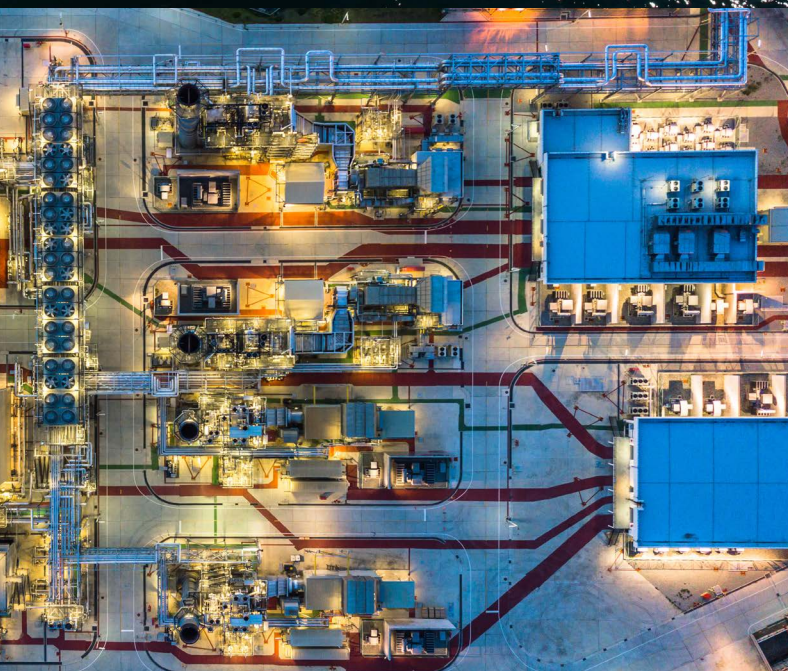


LevelPro

Professional liquid level sensing

Robust, reliable, accurate



gillsc.com

7010-LLS Iss1
© 2021 Gill Sensors & Controls Limited

GILL

RELIABLE LIQUID LEVEL MEASUREMENT

LevelPro is completely dependable in a wide range of clean liquids including fuels, oils, chemicals and water based liquids.

HIGH QUALITY CONSTRUCTION

Manufactured using premium quality 316 stainless steel, sealed electronics and with a range of mounting options, LevelPro withstands use in aggressive liquids. Its high quality, chemically inert construction provides marine grade corrosion resistance.

WIDE TANK COMPATIBILITY

LevelPro offers the same dependable results whatever the tank shape or tank material. Something not all sensors can boast!

FAST INSTALLATION & SETUP

LevelPro is easy and quick to install. Compatible with most common tank interfaces, LevelPro is up and running in a few simple steps.

STABLE MEASUREMENT EVEN IN MOVING LIQUID

LevelPro provides market leading stable level measurement in moving liquids. Its 'dual concentric' sensor tube design ensures accuracy even in turbulent liquids.

Product Description

LevelPro liquid level sensor is the ultimate in accurate and reliable liquid level measurement in challenging environments.

Designed to offer 'best in class' life-time ownership, LevelPro is a fully self-contained sensor proven in applications measuring fuels, oils, chemicals, coolants and other water-based liquids. With either voltage or current output, LevelPro is compatible with industry standard gauges, PLCs, RTUs and IoT data collection systems.



Capacitive level sensing technology has no moving parts. The sensor measures the relative permittivity of the liquid and compares that to air. By knowing the relative permittivity values at two states, full of liquid and "full" of air, the sensor can calculate the level in real time.

[> View Technical Specifications](#)

GILL

gillsc.com

7010-LLS Iss1
© 2021 Gill Sensors & Controls Limited

GILL

Product Success

LevelPro is used in varied applications demonstrating its versatility. In the marine sector, LevelPro is used in hovercraft, submarines and speed boats. In transportation it is used in locomotives and in the wider industrial sector it can be found keeping watch in oil tanks for hydraulic press machines. It is even used to ensure swimming pools are topped up!

LevelPro is selected by operators who value long-term reliability and lowest lifetime cost of ownership. Many repeat customers appreciate the easy and fast deployment, zero maintenance requirements and know they are buying a product that gives years of reliable service.



Sensor Benefits

- Continuous liquid level measurement
- Highly dependable, direct measurement using capacitive technology
- Long lasting robust construction with high IP rating
- No moving parts to maintain
- Compact design suitable for top of tank or inverted installation
- Factory calibrated for quick and easy setup

DID YOU KNOW?

LevelPro can measure 1024 separate steps between full and empty, that's ~1mm increments, on a 1m sensor.

Installation Tank Types

Metal Tank? Plastic Tank? Dished Bottom? – No problem!

LevelPro is a fully operational self-contained liquid level sensor so it is really easy to set up. Unlike other sensor types that require a reference tube to operate in non-metallic tanks, LevelPro works in all tanks due to its 'dual concentric' design so you know it will be compatible, no matter what the tank is made from.

Tank shape is also no issue as LevelPro allows easy calibration to give volumetric output for any vessel configuration.

Product Review

What our customers say:

"We struggled for years with broken or intermittent fuel level signals. We tried a number of different brands, but the only one that stood up to our tough environment was the LevelPro."

Instrumentation Engineer - Marine Craft Manufacturer



[> View Technical Specifications](#)

GILL

gillsc.com

7010-LLS Iss1
© 2021 Gill Sensors & Controls Limited

GILL

Easy to install

Fast installation

Many sensor technologies such as radar require significant set up. LevelPro arrives ready calibrated for your specific liquid and is ready to supply accurate data straight 'out of the box'. Once you receive your sensor it can be immersed in the liquid and immediately delivers calibrated liquid level data. No need to drain the tank and refill.

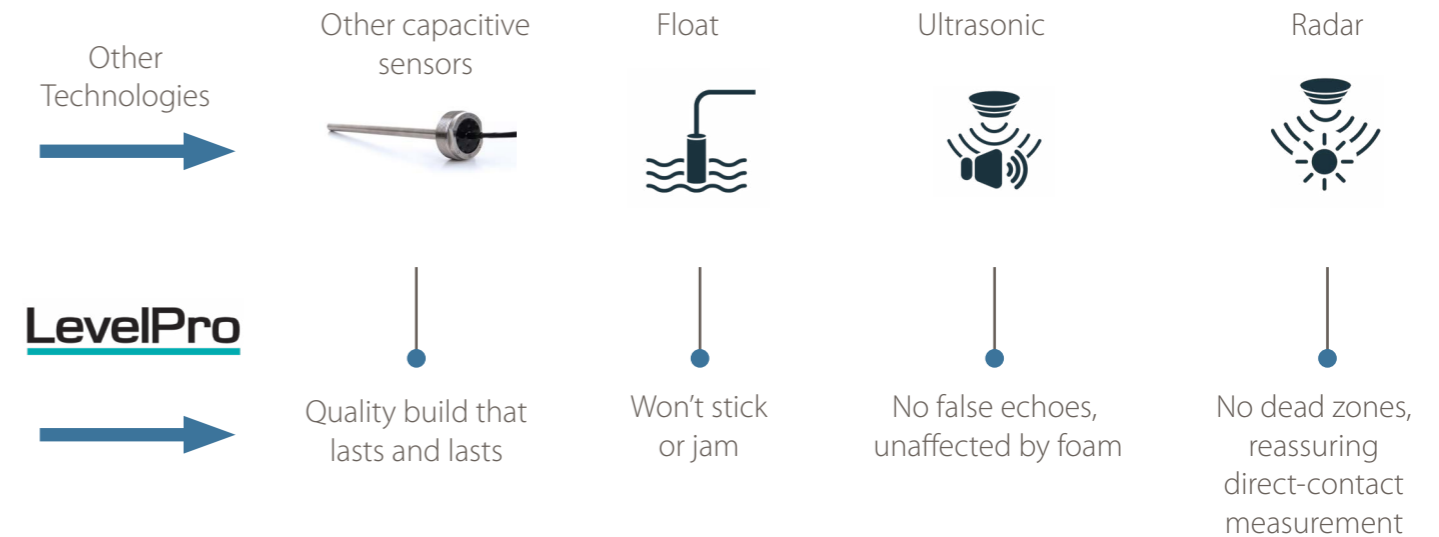
Accurate level data, whatever the tank shape

LevelPro can be further optimised to accurately measure liquid levels in unusual or irregular shaped tanks. With a specially developed volumetric output, adjustable through Gill software, all tank shapes can be accurately accommodated.

Liquid level measurement options

How does LevelPro measure up against other products?

Long lasting quality and reliability are not the only benefits when compared to other technologies.



Application Story

Unexpected rail stoppages cause major disruption as well as inconvenience for passengers and fines for operators. When a freight locomotive operator wanted to prevent stoppages due to empty coolant tanks, they turned to Gill. Using LevelPro to replace the manual level sight glass that regularly clouded with limescale, they now use an LED display in the driver's cab to show the 'real-time' level which eliminates stoppages that would otherwise have occurred.



Ultimate Solution

Do you operate remote tanks or tanks in hard to reach locations? Gill can advise on using LevelPro as part of an internet connected sensor system. Whether you already have a system or would like to use LevelPro as the start of a new system, contact us today to talk about your cloud connectivity needs.

INTERNET OF THINGS



[> View Technical Specifications](#)

GILL

gillsc.com

7010-LLS Iss1
© 2021 Gill Sensors & Controls Limited

GILL

Features:

- 316 Stainless Steel construction
- Durable solid-state electronics with no moving parts
- Extensively tested - including vibration, shock, EMC/EMI and temperature performance
- Tank Profiling feature gives true tank volume, even in irregular shape tanks
- Wide operating temperature range
- User defined full & empty alarms
- Thread or gasket mounting options

> Datasheet



GSlevel Software

GSlevel is a free to download Gill software program designed for sensor customisation. The software allows control over output settings, minimum and maximum levels and alarm switch levels for ultimate adjustability.

GSlevel also gives the user the ability to achieve a volumetric output with its tank profiling feature. Users can reconfigure the sensor using the simple configuration wizard or by uploading a CSV file to profile a cross-section of the data to gain a volumetric output.

Where to buy

Gill sells its products through a worldwide network of trained [distributors](#), so you can count on the very best advice for your application.

For further information on LevelPro, including manuals and datasheets, please click below.

> Read more



> View Technical Specifications



Sensor models:

Outputs

4-20mA, 0-10V

Lengths

100 - 2000mm (set lengths)

Special lengths available on request

