

Industrial Liquid Level Sensors

Robust level sensors for varied applications

LevelPro is the ultimate in robust and reliable liquid level sensing for a wide variety of applications. Designed using best in class components, the sensor combines the excellent reliability of contact measurement with either current or voltage outputs.

Having no moving parts, fully sealed electronics and corrosion resistant stainless steel construction, it offers unrivalled long lasting performance in water, fuel, oil, chemicals and coolants across a wide range of industrial applications.

Typical applications

- Industrial process control
- Transportation
- Power sector
- Off highway & military vehicles

Key features

- Stainless steel construction
- Solid state electronics with no moving parts
- Selectable high/low alarm
- Tank profiling system for irregular shaped tanks
- 5 bolt SAE or BSP, UNF or NPT thread mounting options
- Wide operating temperature range
- Compatible with water, saline, fuels, oils & chemicals

Benefits

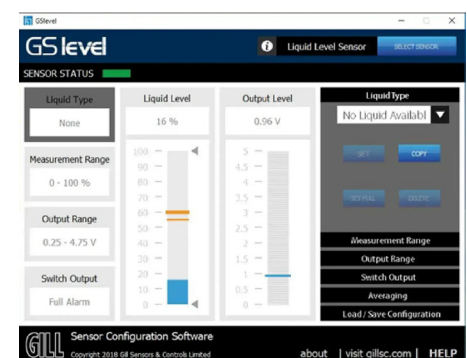
- Continuous liquid level measurement
- Dependable performance using capacitive technology
- Long lasting robust construction
- No moving parts to maintain
- Standard or inverted installation possible
- Factory calibrated for quick and easy setup



Sealed electronics



Stable readings in turbulent liquids



GSlevel software optimises operation

Industrial Liquid Level Sensors

Robust level sensors for varied applications

GENERAL SPECIFICATION

Accuracy	+/- 2% FSD @ 20°C
Linearity	+/- 2% FSD @ 20°C
Operating temperature *	- 40°C to +125°C *Refer to temperature derating graph in figure 1
Humidity	93% RH @ 40°C
Pressure	10 bar (differential & absolute)
Compatible media **	fresh water, salt water, ethylene glycol, gasoline, unleaded, LRP, diesel ** consult Gill for other liquids
Seal materials	Fluorosilicone O-rings (excl. NPT) Klingsil gasket (excl. NPT)

OUTPUTS

Voltage	0.25V - 4.75V (factory settings)
Max voltage range	0.25V - 10.0V
Current	4 - 20mA
Switch	Open collector output 50V / 1A Max Switch to ground

DIMENSIONS

Overall length	Probe length + 18mm (NPT + 27mm)
Mounting flange height	18mm (27mm NPT)
Mounting flange Ø	63mm (60.4mm NPT)
Fixing bolt aperture Ø	5.1mm (excl NPT versions)
Cable position	Side exit (top exit NPT)

APPROVALS

Ingress protection	IP66 / IP68
Thermal shock	EN 60945
Vibration	EN 60945
Humidity	EN 60945
Pressure	10 bar (differential & absolute)
EMC	EN 610000, EN 61326, EN 60945

This product is not designed or certified for use in ATEX environments

ORDERING

Length range (mm):	Output type:	Mountings:
1 = 100-500 (25mm increments) 2 = 550 -1000 (50mm increments) 3 = 1100-1500 (100mm increments) 4 = 1600-2000 (100mm increments)	K = Voltage (0-10V) L = Current (4-20mA)	A = 5 bolt SAE & 1.25" BSP thread B = 5 bolt SAE & 1.125" UNF thread C = 2" NPT thread

7010 - 00



ELECTRICAL

	Voltage 0-10V	Current 4-20mA
Supply voltage	5-32 VDC	9-32 VDC
Over voltage protection	> 32 VDC	> 32 VDC
Supply current @ 12 VDC	< 15 mA	> 15 mA
Reverse polarity protection	to -32 VDC	to -32 VDC
Resolution	10 bit	10 bit
Report rate	100 Hz	100 Hz
Sensor configuration * Requires RS232 adaptor	RS232	RS232

MECHANICAL

Construction	stainless steel 316, FEP, PEI
Probe length	100mm to 2000mm (standard increments)
Mounting options	SAE 5-bolt, 1.125" UNF 1.25" BSP threaded, 2" NPT
Weight	from 300g (dependant on length)
Cable	20 AWG type 44, DR25
Cable tail length	1000mm

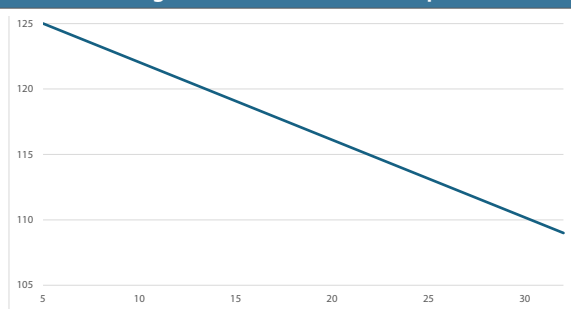
CONNECTIONS

	Red	+V
	Black	-V (Ground)
	Orange	Primary output
	Yellow	Secondary output
	Green	Rx
	White	Tx
	Silver	Drain wire

USB—RS232 ADAPTOR (Part number 1484-00-086) *

USB—RS232		SENSOR	
	Red		Red
	Black		Black
	Yellow		White
	Orange		Green

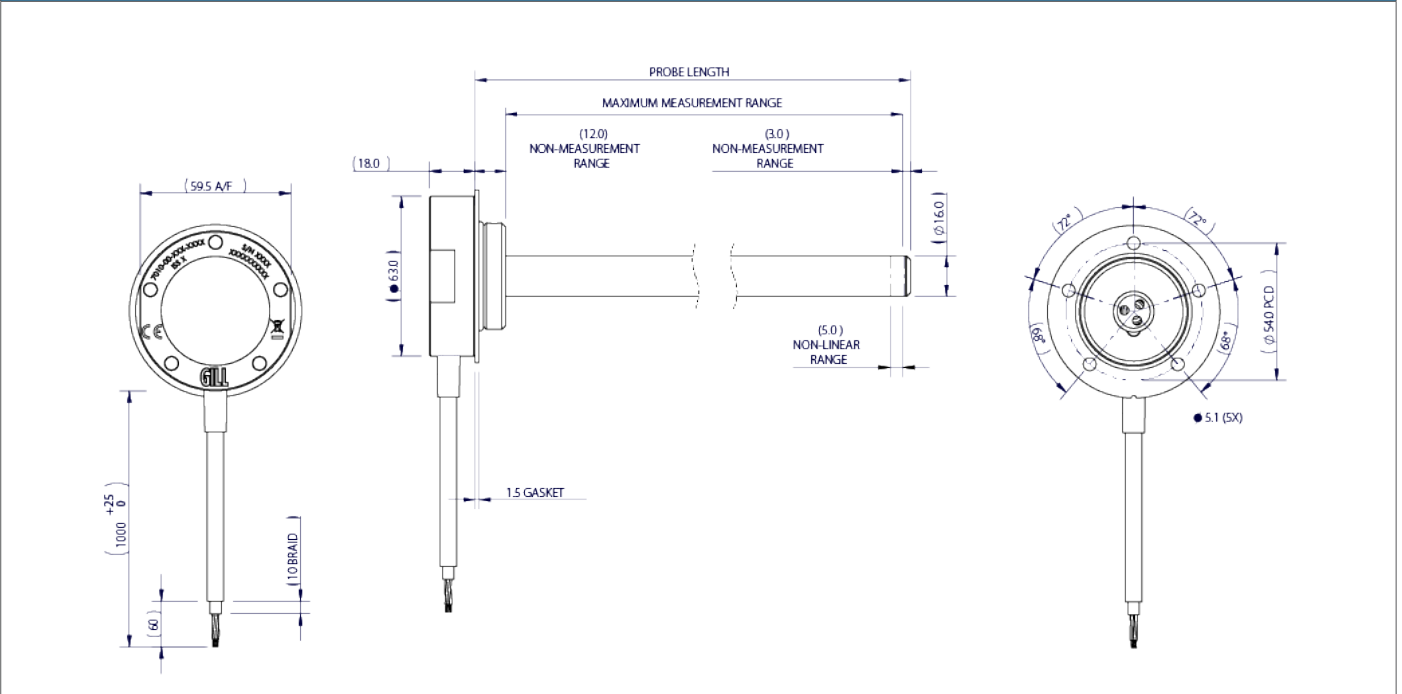
FIGURE 1: Derating - maximum ambient temperature



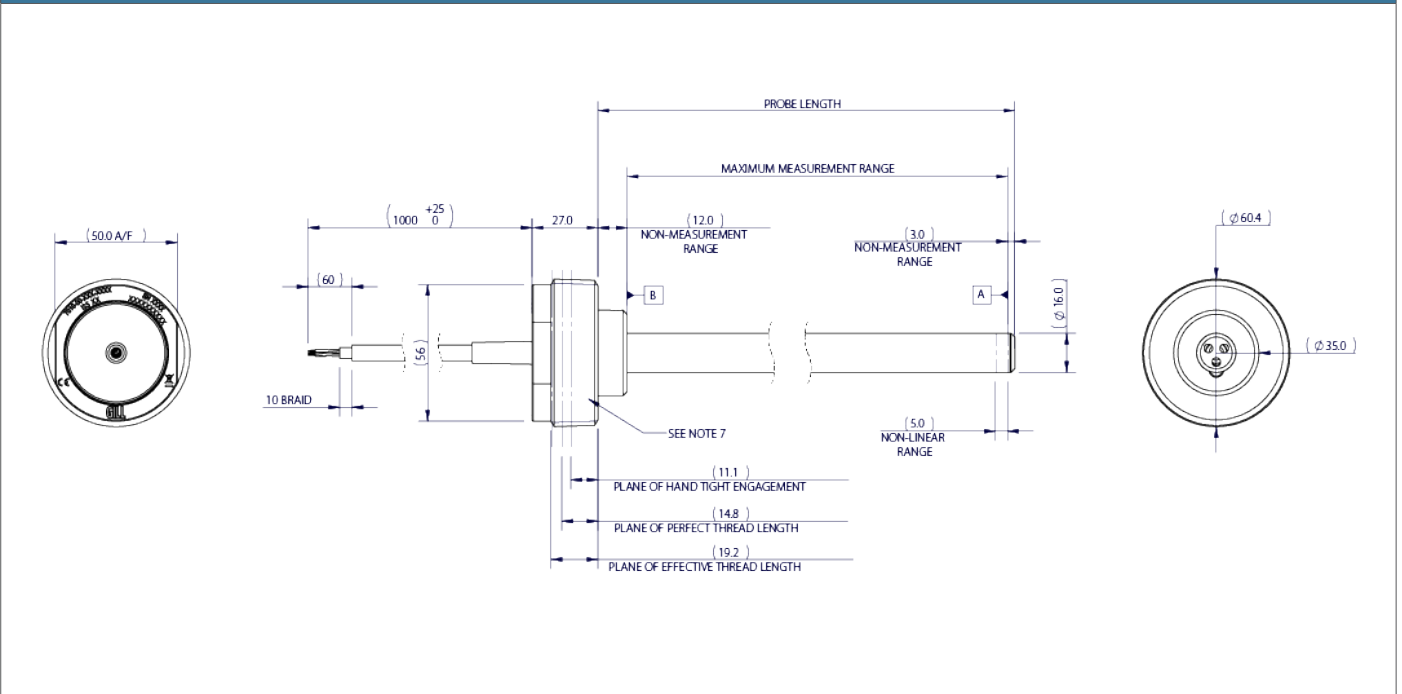
Industrial Liquid Level Sensors

Robust level sensors for varied applications

DETAILED DIMENSIONS (5 BOLT SAE, 1.125" UNF & 1.25" BSP VERSIONS)



DETAILED DIMENSIONS (2" NPT VERSION)



Designed and manufactured in the UK by Gill Sensors & Controls Limited.

For more information about LevelPro please contact Gill Sensors & Controls.