

Lightweight Liquid Level Sensors

High precision liquid level measurement for specialist applications

LevelLite is a specialist sensor for applications where equipment weight is a priority.

Built from quality aluminium with sealed electronics, and with a range of mounting options, LevelLite offers continuous level measurement in harsh environments like Unmanned Aerial Vehicles where high performance and low weight equal maximum flying time.

Factory calibrated to deliver precise measurement as standard, LevelLite is available with either a switched or temperature output and can be used in fuels, oils and coolants for maximum flexibility of use.

Typical applications

- Unmanned aerial vehicles
- Formula 1 motorsports and electric hypercars
- Aero applications

Key features

- Lightweight 6082 grade aluminium construction
- Accuracy 1% FSD at 20°C
- Wide operating temperature range -40°C to $+125^{\circ}\text{C}$ * Refer to temperature derating graph in figure 1
- Temperature or switched output options
- Multiple standard or custom mounting options
- Measures high performance fuels, oils and coolants
- Any length available between 100mm—750mm

Benefits

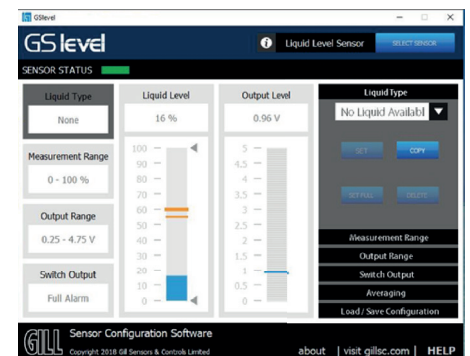
- Lightweight sensor using high grade components
- Compact design for tight spaces
- Continuous level measurement with secondary alarm output
- Solid state electronics for long life in harsh conditions
- Accurate results from irregular shaped tanks
- No moving parts to maintain
- Factory calibration for precision and easy installation
- Proven in exacting applications - motorsport and aerial vehicles



Lightweight sensor



Multiple mounting options



Calibration software

